



THE
GUS ANTHONY
TEAM
Expert Resource in Real Estate

IT'S MORE THAN
JUST A HOME.
**IT'S A
LIFESTYLE.**

15628 JILLIANS FOREST WAY
Centreville, VA 20120

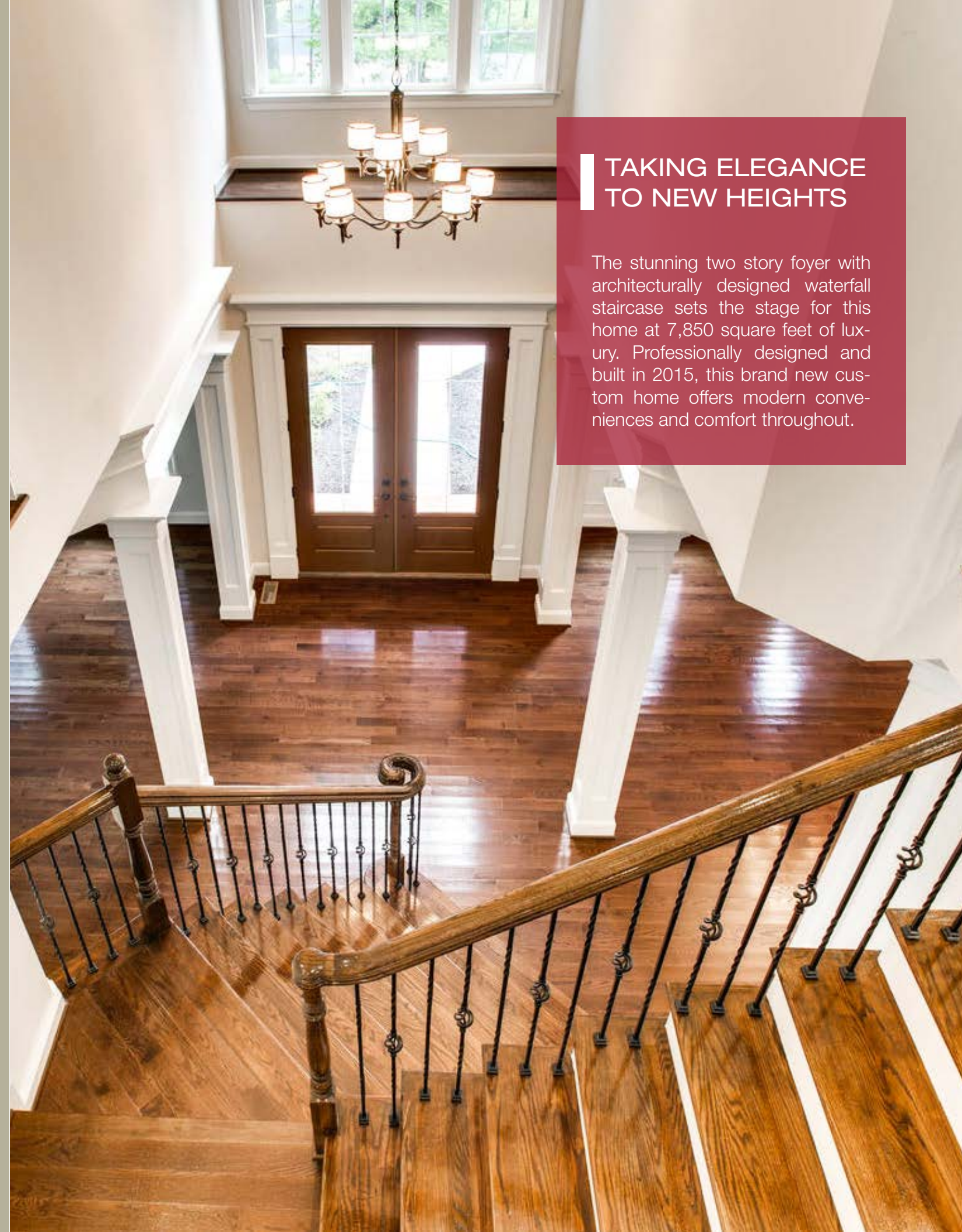
www.1Jilliansforest.com




THE
GUS ANTHONY
TEAM
Expert Resource in Real Estate

Mickey Shaffer-Anthony
Realtor, Marketing Director

Office: (703) 818-1886
Mobile: (703) 930-3655



TAKING ELEGANCE TO NEW HEIGHTS

The stunning two story foyer with architecturally designed waterfall staircase sets the stage for this home at 7,850 square feet of luxury. Professionally designed and built in 2015, this brand new custom home offers modern conveniences and comfort throughout.



COOKING ON A GOURMET LEVEL

The gourmet kitchen is equipped with stainless steel appliances and includes oversized designer island, granite counters and large gathering spaces.

- State of the Art Appliances
- Walk-in Pantry
- European Style Hood
- Contrasted Island
- Morning Room Off Kitchen
- Designer Finishes
- Upgraded Cabinetry





MASTERING THE ART OF RELAXATION

- Sitting Room
- Large Walk-In Closet
- Tray Ceiling
- Recessed Lighting
- Dual Sinks with Custom Cabinetry
- Separate Soaking Tub and Glass Shower

The owner's suite offers everything possible for relaxation from the large, spa like master bath to the private, light filled sitting room.



LIVING IN A LAP OF LUXURY

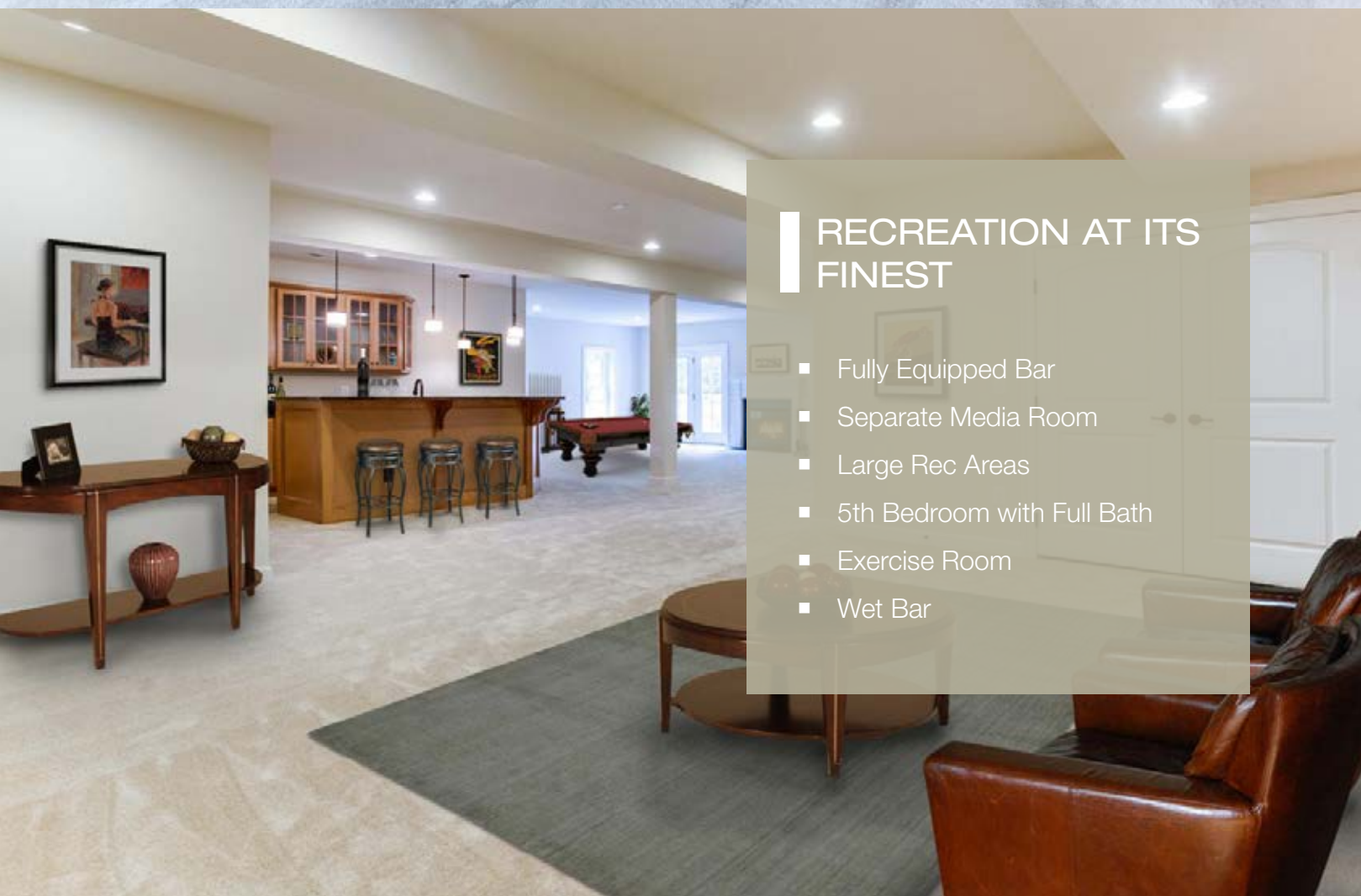
- Two-Story Open Concept Family Room with Large Windows
- Extensive Molding and Decorative Touches
- Hardwood Floors on Main Level
- Gas Fireplace
- Natural Lighting
- 10' Ceilings Main Level





SPACIOUS UPPER LEVEL

Three En Suite Bedrooms all with Walk-In Closets



RECREATION AT ITS FINEST

- Fully Equipped Bar
- Separate Media Room
- Large Rec Areas
- 5th Bedroom with Full Bath
- Exercise Room
- Wet Bar



OUTDOOR LIVING

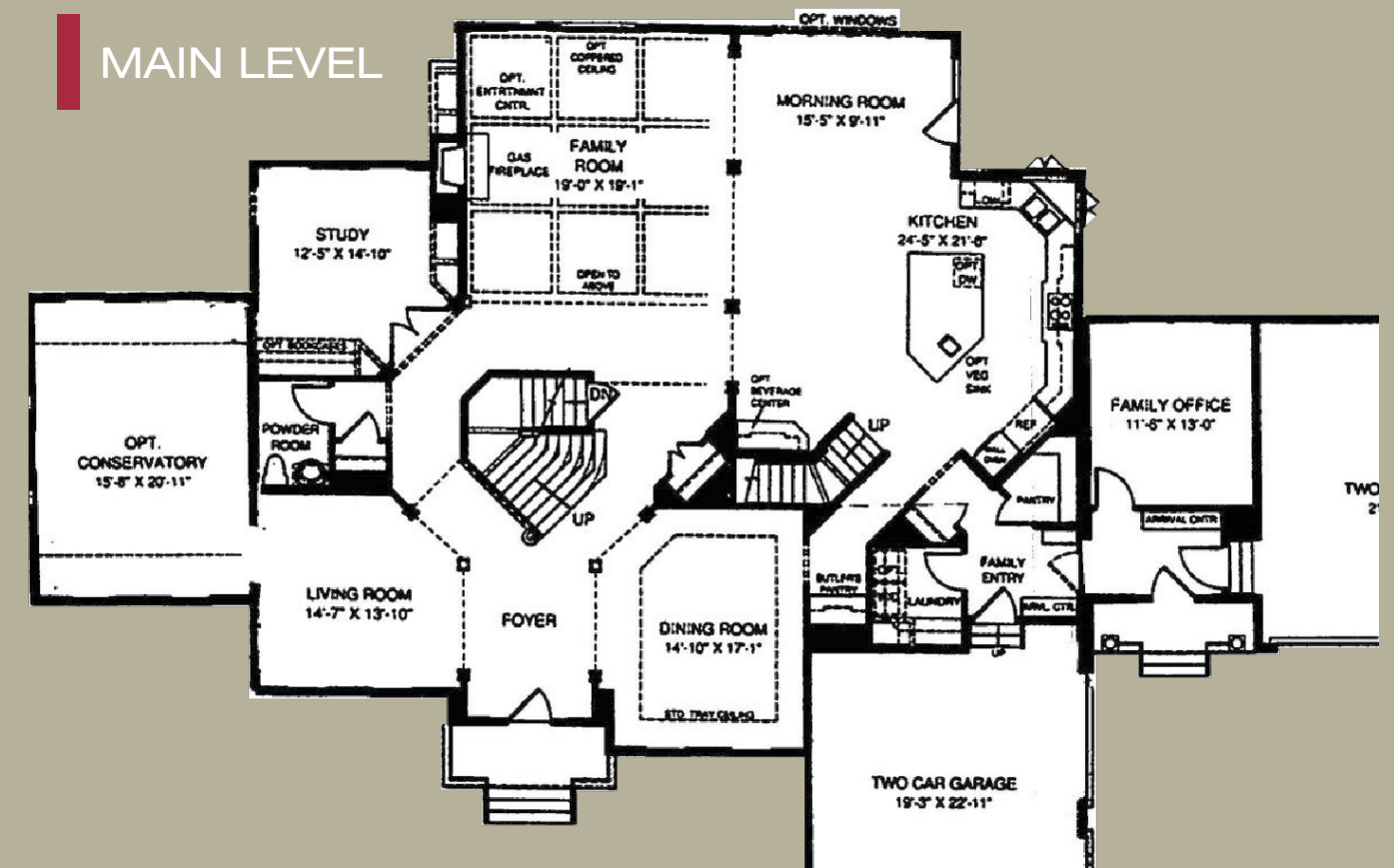
Nestled on a 5 acre wooded homesite in Fairfax County, the home has ultimate privacy and seclusion with beautiful panoramic views. The flat and large backyard make this home family friendly and perfect for entertaining.

INCLUDED FEATURES

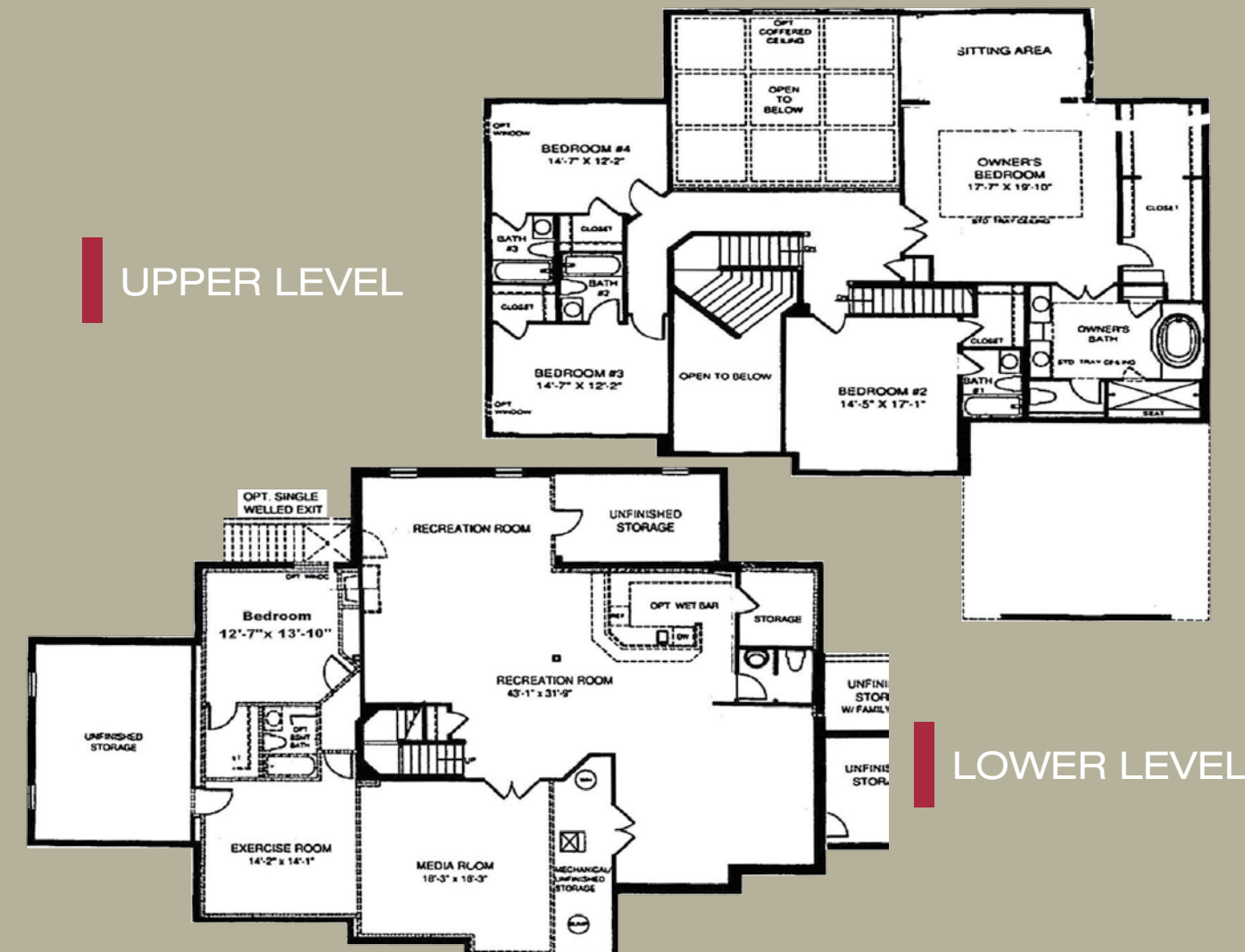
- Full Builder Warranties
- Convenience of a Turnkey Home
- 5 Acre Wooded Lot
- High Energy Efficiency HVAC System
- Central Vacuum and Security System
- Double Hung Vinyl Windows
- House Wrap with Efficiency Insulation with Top Rated R-Factors
- Three Sided Brick
- Two Separate Front Door Entrances
- Entry Furniture with Mudroom Bench
- Hardwood Floors on Main Level and Ceramic Tile in Laundry Room and Mudroom
- Two Hardwood Staircases with Metal Balusters
- Expansive Two Story Family Room with Rear Wall Windows
- Private Main Floor Den
- Butler's Pantry with Wine Fridge, Wine Glass Holder and Granite
- Six Burner Gas Cook-top
- Energy Star Stainless Steel Appliances and Granite Countertops
- Pot Filler Faucet
- Oversized Contrasted Island with Seating, Vegetable Sink and Decorative Lighting
- Built by NV Homes
- European Designed Hood Over Gas Cooktop
- Built In Double Wall Oven and Separate Microwave
- Furniture Grade Cabinetry with Quiet Close
- Large Walk-in Pantry
- Spacious Master Suite with Tray Ceiling and Private Sitting Room
- Large Walk-In Closets
- Master Bath with Soaking Tub and Glass Roman Shower
- Furniture Grade Cabinets and Granite Countertops with Upgraded Bronze Hardware
- 12X12 Ceramic Tile Floors and Wall Surround
- All Bedrooms with Private Full Bath and Walk-In Closets
- Daylight Basement with Exit to Backyard
- Elegant Bar in Basement with Refrigerator, Dishwasher, Sink and Granite Countertops
- Movie Room Pre-wired for Projector, T.V and Speakers
- Lower Level Bonus Room/5th Bedroom with Full Bath
- Large Lower Rec Area with Ample Storage
- 4 Car Garage, 2 Side Load and 2 Front Entry
- Private Drive on Huge Cul-de-sac

For more features and photos, visit www.1Jilliansforest.com or contact Micky Shaffer-Anthony for questions or to schedule a tour at (703) 818-1886.

MAIN LEVEL



UPPER LEVEL



LOWER LEVEL



Mickey Shaffer-Anthony | (703) 930-3655 | team@gusanthony.com | www.thegusanthonyteam.com
14155 Newbrook Drive, Suite 100 Chantilly, VA 20151